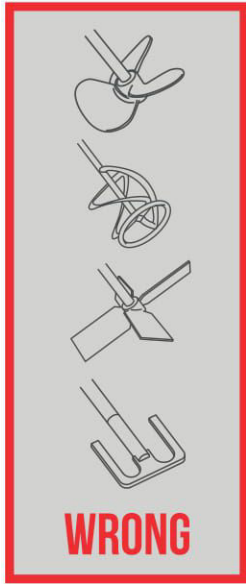


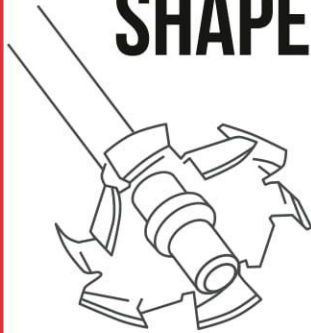
PROCESSING KEY POINTS

TUBALL™ MATRIX is a concentrate based on pre-dispersed TUBALL™ graphene nanotubes

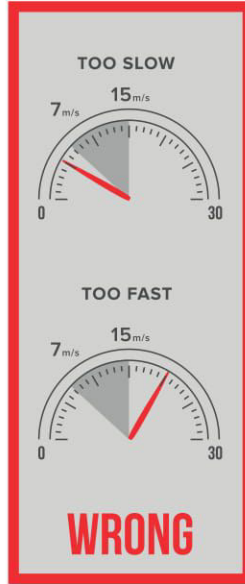


WRONG

BLADE SHAPE

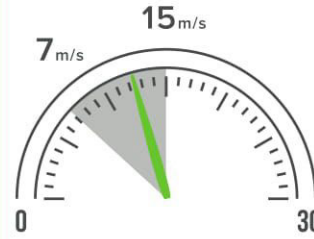


CORRECT

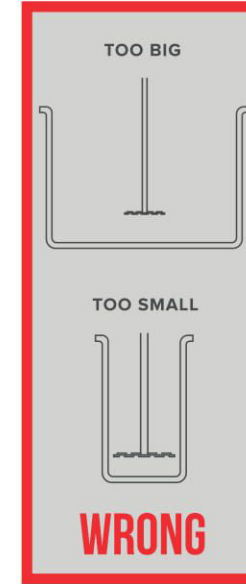


WRONG

SPEED

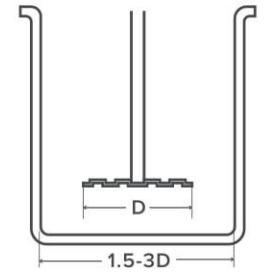


CORRECT



WRONG

VOLUME RATIO



CORRECT



WRONG

TIME



CORRECT

STAGES

20 min
stage 1

NEAT RESIN

98 parts

2 parts

TARGETED VOLUME OF **TUBALL™ MATRIX**

5 min
stage 2

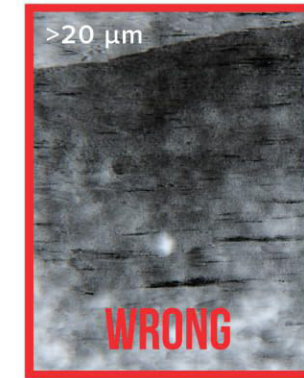
INTERMEDIATE COMPOUND

THE REST OF THE RESIN

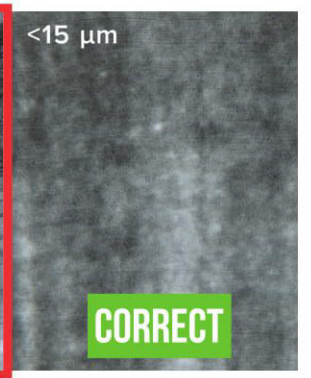
CORRECT

QUALITY CONTROL

- take tip samples with a stick and flatten into a thin layer on a white sheet of paper
- use grindometer to define particle size (µm)



WRONG



CORRECT